

Figure 2.4 Rendering of St. Louis Depot - Note through track design.
Source: Roger H. Gray, Don L. Hoffsommer, and Osmund Oversby,
St. Louis Union Station : A Place for People, A Place for Trains,
(St. Louis: St. Louis Mercantile Library, 1994), 15.

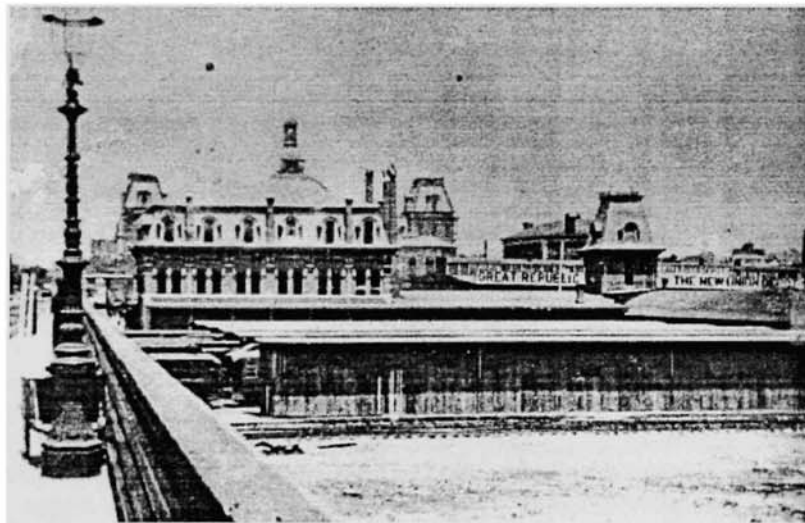


Figure 2.5 St. Louis Depot - ca 1880.
Source: Roger H. Gray, Don L. Hoffsommer, and Osmund Oversby,
St. Louis Union Station : A Place for People, A Place for Trains,
(St. Louis: St. Louis Mercantile Library, 1994), 61.