

How to use i-can; real player modifications

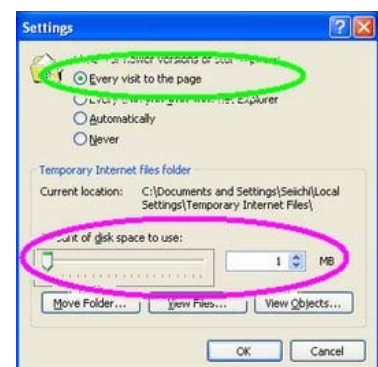
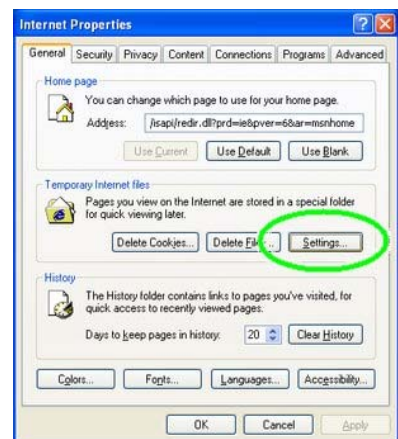
<http://rika.educ.kumamoto-u.ac.jp/i-CAN/eng/index.html> (Sorry English page is still old)

Now 6 i-CANs are running

- * William (Yerkes Observatory)
- * Roberta (ALMA Site)
- * Luna (Minami Aso Luna Observatory)
- * Rose (Rosemary Hill Observatory)
- * Sacra (Apache point Observatory)
- * Merope (NAO Subaru Site)
- ** Santa (Bradford Telescope site) is no Connection.

Notes for Operation**■ Browser**

- ✓ View the images in a sufficiently large window.
The window size for image viewing is designed for 1024x768. The window size for i-CAN operation is 960x640.
- ✓ Enable JavaScript.
JavaScript is necessary to open the operation window and indicate the remaining time for operation right. When JavaScript is disabled, the page may not be displayed properly.
- ✓ Restrict cache functions.
When operation page is cached by the browser, the page may not be opened properly. Therefore, cache functions should be restricted as much as possible. The procedure for restricting cache functions with Internet Explorer is as follows.
 - (i) Choose Internet Properties from Tools of IE.
 - (ii) Click Settings of Temporary Internet files in the dialog box.
 - (iii) Select Every visit to the page (shown on the top) from the list for Check for newer versions of stored pages (encircled in green).



(iv) In addition, if your computer is connected to the Internet via proxy server, you are recommended to minimize the disk space at Amount of disk space to use (encircled in purple) in Temporary Internet files.

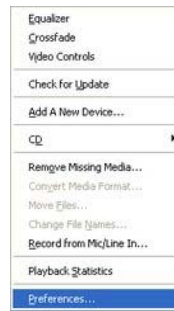
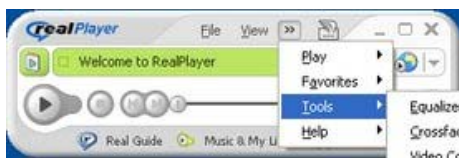
Click OK to close the dialog box and complete the setting.

■ RealPlayer

Please ask your school network administrator whether to accept using Real Player at your school.

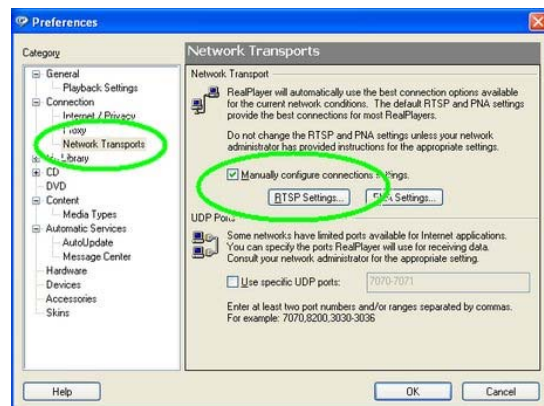
Step-by-step procedure is given below for users who cannot browse real-time movie for security reason (often happen in schools with high-level internet security).

(i) Select **Tools** and then **Preferences**



(ii) Select **Network Transports** from Category in the dialog box

Check **Manually configure connection settings** and click **RTSP Settings**



(iii) Check **Attempt to use HTTP for all content** at the bottom, and uncheck the other boxes

See more: [How to use i-CAN in i-CAN Home page](#)

